

# User manual

Please read for instructions on how to setup and operate. For a quick guide refer to separate Quick setup



## CM821

# Quick Guide



## NOTE ON HELP MATERIALS

In addition to this printed user's guide, the following sources of help are available:

- Visit Central Pacific's Technical Support at [www.cpit.com](http://www.cpit.com)

### UNPACKING CM821

- Unpack the CM821 player and other items.

The items listed below are inside the packaging:

- 1 CM821 player
- 1 AAA battery
- 1 USB connection cable
- 1 Ear bud type headphone
- 1 User's Guide
- 1 Installation CD-ROM

## SETUP

Follow the instructions below to setup the CM821. Here's an overview of the installation process:

Insert Battery

Insert Earphones

Connect MP3 player to PC

Transfer songs from the PC to the MP3 player or Flash Cards (if one is available)

### INSERT THE BATTERY

1. Open the battery compartment door and insert one AAA battery (included). Be sure to match the battery's polarity markings (+ and -) to the polarity markings on the player.



2. After inserting the battery, close the battery compartment door.

3. Insert the earphones.

## INSTALLING THE SOFTWARE (Win98 only)

If you are using Windows 98 you have to install the software that comes with the MP3 player other wise you will not be able to transfer songs directly to the MP3 players's built in memory capacity.

Do not connect the MP3 player to the PC until after the software is installed.

1. Insert the software CD into your CD drive.
2. Browse the contents of the CD for a setup program. For example. "setup.exe"
3. Run the program by double clicking the icon or select it with Left Mouse Button and press ENTER on your keyboard.
4. Follow on screen prompts to install the software.
5. If it asks you to reboot, then restart Windows as instructed.

Users with Windows ME, 2000, XP do not need to install anything. Windows NT is not supported because it does not support USB connectivity.

After installation is complete. Connect the MP3 player to the PC using the USB Cable supplied.

Windows will detect the new device and assign a new drive letter to the MP3 player in explorer. This drive letter is where the songs will be copied.

If a Flash memory card is inserted with the MP3 player then you will get one more drive letter under the first one assigned.

## TRANSFERRING SONGS

**IMPORTANT:** Never disconnect the MP3 player from the PC during file transfer. Doing so may corrupt or damage the built in memory.

To copy songs from the PC to the MP3 player locate your MP3 files/songs and either:

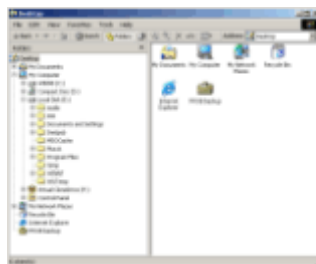
A. Drag and drop the files to the new drive letters for the MP3 player.

or

B. Select the songs you want and then select "COPY" from the "EDIT" menu and then right click the Mouse Button in the drive icon and select "PASTE" from the popup context menu.

**NOTE:** When you use method "A." You will be moving the files from one folder to another. This means the files will no longer be where they were before. So unless you don't want a copy to remain afterwards then this method is ok for deployment.

If however you want to keep backup copies of all your songs even after transferring them to the MP3 player then use method "B." Since you are copying and not moving the songs from the PC to the MP3 player. Method B's description of copying files is not the only method there is. There are other ways to copy files but all do the same process. You could use the Windows shortcut keys instead of the menus.



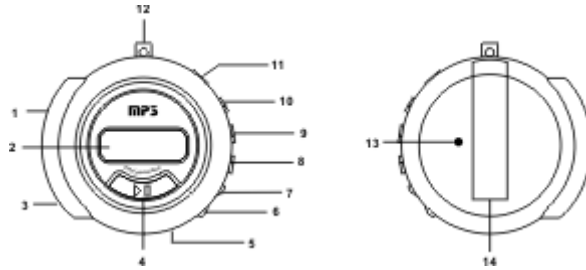
Windows explorer

## USING THE MP3 PLAYER

This section will detail the various buttons and functions that are included with this MP3 player.

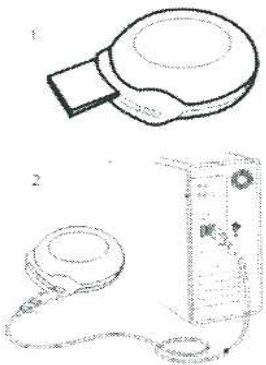
### The button descriptions

### The Modes available



1. Card Slot - Accepts MMC and SD Flash card only
2. LCD Display - Shows current status of the MP3 player
3. USB port - For fast file transfer between the computer and MP3 player
4. Play/Pause/Stop - One touch button that controls the playback
5. Hold - Enables all other controls to not respond
6. Volume - - Decreases the volume level
7. Volume + - Increases the volume level
8. Next - Go to song after current song
9. Previous - Go to song before current song
10. Mode - Selects MP3 player function (described later)
11. Headphone - Insert a headphone or earphone here to listen
12. Pot hook - To attach a neck strap.
13. Mic - Microphone to record
14. Battery compartment - Insert battery here

## USING THE MP3 PLAYER



1. First insert the card into the card slot, then connect the mp3 player to the computer using the USB cable.
2. Windows will assign two removable drives, the first one is for the internal memory, the second is the card.
3. From this point you can Read/Write and Transfer songs between the computer and the card as many times as you like.  
Remember to follow the above procedure to transfer files.
4. **DO NOT REMOVE THE CARD DURING THE READ AND WRITE PROCESS.**
5. During the Read and Write processes, the LCD displays "USB Reading/Writing...".
6. When there is no activity the LCD displays "USB READY...".
7. This is when you should remove the mp3 player.

### IMPORTANT!

Do not remove the card from the mp3 player while it is busy. Doing so will corrupt and possibly damage the SD/MMC card or the internal memory which ever one is in use.

Always wait until the MP3 player shows "idle" before disconnecting the unit from the computer.

Remember to use Windows "safely remove device" method when you want to disconnect the mp3 player from the computer.

## USING THE MP3 PLAYER

The CM821 functions are accessed through the Mode button. The various modes are described below

Press the MODE button for 3 seconds to open Menu, the function menu options of the play will be shown as follow:

Music	- To play songs stored in the memory or flash cards
Voice	- To listen to the recording from the microphone
FM	- to listen FM tuner
Settings	- the function menu options (described later)
Delete	- Deletes files inside the memory or flash disk
About	- Displays memory usage

The 'setting' function menu:

EQ	- To add DSP effects, eg: Rock, Pop, Classic, Jazz, Normal
Play Mode	- To repeat songs played
Auto Shutdown	- confirm how long to power off the payer
Backlight	-To set the back light on or off
Contrast	- sets the LCD brightness
Record settings	- To record when a microphone is attached
Language	- Selects the language displayed for the menus
Exit	- Exit from "setting" function menu

What are listed in above table are all options of this menu, push the NEXT or PREV button to forward or backward to select the function and press MODE key to enter.

Use the following buttons to do the changes for each of the modes you want to set.



Play



Mode



Prev



Next



Volume

## SPECIFICATIONS

- Support Mp3, WMA, Wave format
- Built-in 64/128/256 MB flash memory
- Read SD/MMC memory card
- Supports FAT&FAT32 format
- Supports ID3 TAG
- Lyrics display
- Equalizer 5 modes
- Repetition Mode
- A-B Repeat
- Digital voice Recorder
- Radio

- Operating System WIN98/ME/2000/XP
  - 1 AAA-size battery 1.5V
  - USB 2.0 port
  - Play time 4-6 hours
  - LCD display
- Size: 61mm x 62mm x 27mm

### Earphones

- Output power: 5mW x 2
- Frequency Range: 20Hz -20Khz
- S/N Ratio: 90dB
- Distortion: <0.1 %

## TROUBLESHOOTING

If you experience some faults with this MP3 player refer to this general guide on resolving some of the more common problems. If this guide is unable to resolve your problem, you can try and contact us via email or by phone or visiting our website for the latest help available. Also read the manual thoroughly as you may have missed an item that may help you.

Fault	Solution to try
Buttons not working after switching the MP3 player on.	Check whether the Hold switch is in the Locked position, if so move it to the unlock position to restore button functionality.
No sound even when volume is increased	Check whether the Hold switch is in the Locked position, if so move it to the unlock position to restore button functionality.
Nothing happens when you try to switch the MP3 player on.	Check that the battery is inserted in the correct way. The battery might be dead so try a new one.
Cannot transfer files when MMC or SD card is used.	Make sure the Flash card is partitioned in Windows and formatted to Fat 16 or Fat 32 file system.
Cannot play songs from the Flash Card.	First make sure you select the Flash card to use in the Memory/Card mode.
Cannot play anything.	If you are unable to play any songs from the memory you may have to format the memory to start a fresh.

